



HNT Series

TELEHANDLER PRODUCT SERIES

- Standard Telehandler
- Rotating Telehandler
- Telescopic Crane Loader
- Inside Container Operation Telehandler
- Mini Telehandler



FUJIAN SOUTHCHINA HEAVY MACHINERY MANUFACTURE CO., LTD.



FUJIAN SOUTHCHINA HEAVY MACHINERY MANUFACTURE CO., LTD.

SOCMA POWER Lift Your Business

Fujian SouthChina Heavy Machinery Manufacture Co., Ltd. (SOCMA) , is a National high-tech enterprise integrating logistics handling machinery and electric construction machinery R&D, production, sales, and service. It is a "special and excellent" enterprise in Fujian Province and a leading enterprise in the professional equipment export industry.

The SOCMA TELESCOPIC FORKLIFT Series is an autonomously developed handling and lifting logistics equipment with several tasks that combine hydraulic, electrical, and mechanical aspects. Its performance sets it apart internationally and it marks the pinnacle of Chinese telescopic forklift manufacture. They are widely employed in ports, logistics, mining, warehousing, agriculture, storage yards, and other areas. Their outstanding quality, good adaptation to working settings, and low operation and maintenance costs have earned them the respect and trust of both domestic and foreign customers.



Product Catalog

Products from SOCMA's telescopic forklift range in standard, rotating, hoisting, box-in, mini, and other categories. They may be tailored to meet specific customer requirements, giving you one-stop shopping for all your product needs.

Standard Telehandlers

HNT3007/3507/4007-4Z

HNT5010-4Z/HNT7510-4Z

HNT4017/4517/5017-4Z/HNT7017-4Z

Rotating Telehandlers

HNTR4015-4Z

Hoisting Telehandlers

HNT110-2

Side container Telehandlers

HNTC-160/180

Mini Telehandlers

HNT-M30/25

Engine

Equipped with a Cummins turbocharged diesel engine and high-pressure common rail fuel system, which has strong power, energy saving, and environmental protection, and meets the requirements of efficient operation.

The power system is equipped with an air-to-air cooling radiator to reduce the intake temperature of the engine, increase the intake air volume, and increase the engine power.



Hydraulic System

Adapting closed hydraulic static walking, electro-hydraulic direct control, and lifting with hydraulic balancing function, it offers good automatic adaptability and control performance.

To guarantee the thermal balance of the entire machine, the hydraulic system is fitted with an oil return radiator and a back pressure prevention device.

Well-known brands provide closed plunger pumps, electronically controlled multi-way valves, hydraulic cylinders, hydraulic motors, and electronically controlled pilot valves.



Fork

The work attachments can be readily replaced according to the work needs to satisfy the needs of "forking, hoisting, loading, grabbing, lifting, clamping, and moving" activities, realizing one machine with various applications.

The Cascade high-strength forks can double service life.

The quick-change shelf design allows for speedier accessory replacement.



IMPROVEMENT NEVER ENDS

HNT3007/3507/4007-4Z HNT5010-4Z/HNT7510-4Z
HNT4017/4517/5017-4Z



Drive Axle

Use high-quality axles and gearboxes to get optimal performance.

Adopt a completely hydraulic load-sensing steering system, four-wheel drive, and four-wheel steering, with the ability to vary between front-wheel, four-wheel, crab-shaped, and other steering modes to respond to changing work situations.

The turning radius is tiny, the maximum driving speed is 30km/h, and operating in a tight space is flexible, efficient, and convenient.



Working Equipment

The operational device is designed with a large-section, high-strength box structure, and finite element mechanics analysis for improved durability.

Torque limiter limits height, length, and weight for safe operation.

The pilot provides precise control over lifting, telescoping, and tilting actions, and two or more arm sections are selected based on different lifting heights.

Chassi

The extended wheelbase and box-shaped integrated frame enhance the chassis's rigidity, strength, and reliability.

The frame can be swung and leveled to ensure that the vehicle body operates smoothly even during complex procedures.



Tires

It has off-road herringbone tires, and the front and back axles can swing around the center with a 40% gradient. It provides excellent traction, passing, and off-road performance.



Braking System

Compared to traditional air brakes, Hydraulic wet brakes on both the front and back axles dissipate heat faster and provide more reliable and safe braking.

Cab

The spacious and comfortable driving space, low noise, good sealing, sunroof design, and fully open vision ensure a safe driving experience.

Features built-in heating and cooling air conditioning, as well as aircraft OPS premium chairs that are ergonomic and comfortable to sit on.

The adjustable steering gear, electronically regulated throttle, and integrated pilot handle provide a smooth and easy operation.

The multifunctional LCD display monitors the engine's functioning state, including speed, oil temperature, and water temperature.

Equipped with an anti-rollover cab that meets international safety standards, providing excellent driver protection.

Standard features include a reversing picture and buzzer for real-time monitoring of the working environment, decreasing blind spots and environmental risks.



Battery and Maintenance

Made with domestic, high-quality electrical components, maintenance-free batteries, and flame-retardant wiring, ensuring reliability and durability.

The structural parts, transmission system, and hydraulic system are well-organized, and the engine hood's left and right repair windows offer ample area for efficient maintenance.

It boasts excellent adaptability, high-cost performance, and simple and quick daily maintenance due to the source of domestically produced and standardized parts.

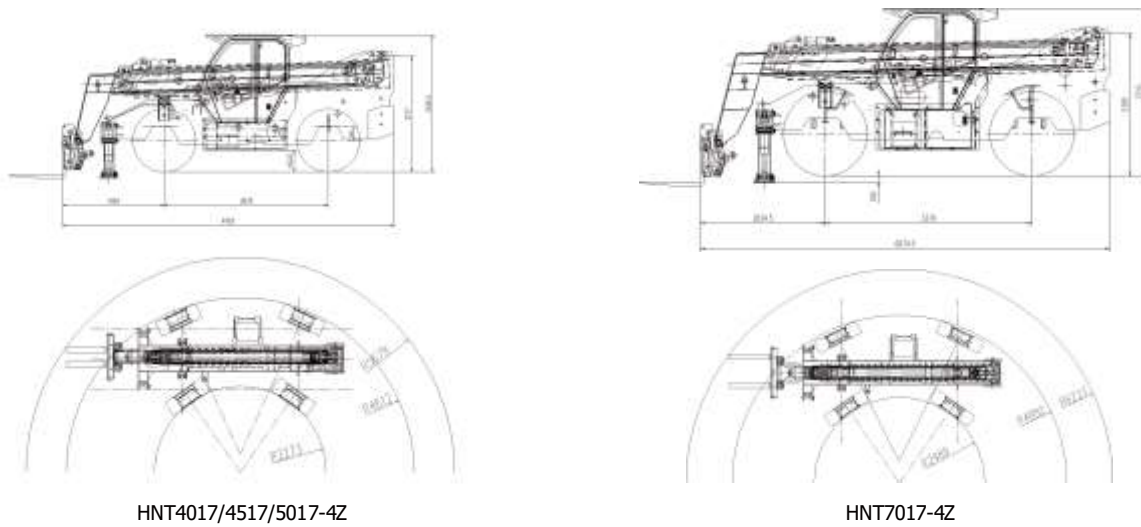


17meter type

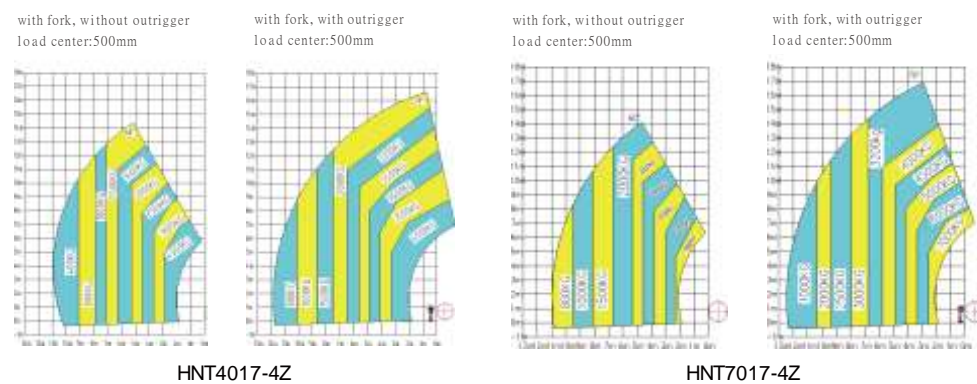
HNT4017/4517/5017-4Z HNT7017-4Z Ideal for construction, warehousing and logistics, airport terminals, high-altitude operations, emergency rescue, and other applications.



Load Charts



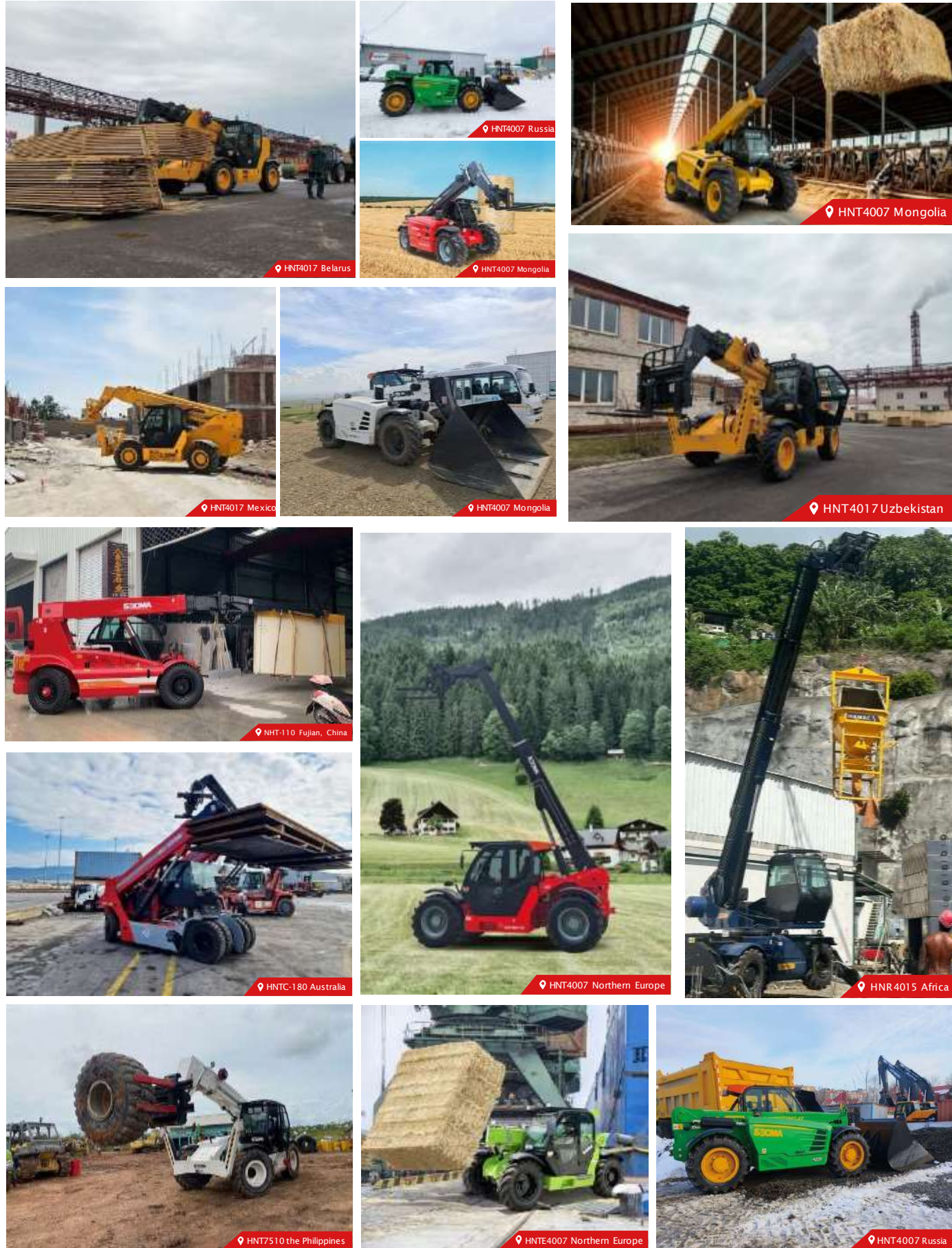
Load Charts



Performance	Unit	HNT4017/4517/5017-4Z	HNT7017-4Z
Max. capacity	kg	4000/4500/5000/7000	7000
Max. lifting height	mm	16625	16900
Load Capacity at Max. Lift Height	kg	2000 (Outriggers down) 1500 (Outriggers up)	3200 (Outriggers down) 2000 (Outriggers up)
Max. forward reach	mm	11265	11800
Load capacity @ max. outreach	kg	800 (Outriggers down) 400 (Outriggers up)	1000 (Outriggers down) 800 (Outriggers up)
Boom Sections	-	4	4
Lifting/Lowering	S	19/17	19/17
Extension/Retraction	S	19/16	19/16
Weight and dimensions			
Length (without fork)	mm	6200	6720
Overall width	mm	2500	2500
Overall height	mm	2560	2710
Wheel base	mm	3070	3370
Ground clearance	mm	410	425
Turning radius(outside)	mm	4650	4900
Cab width	mm	930	930
Fork angle (up/down)	°	12/100	12/100
Luffing angle	°	-2~78	-2~70
Frame Leveling	+/- °	9	9
Overall weight	kg	14500/14800/15000	16000
Forks dimension (L / W / T)	mm	1000*150*50	1220*150*65
Engine			
Manufacturer	-	DF Cummins	DF Cummins
Emission standard	-	EU Stage III	EU Stage III
Model	-	QSB3.9-C125	QSB4.5-C160
Rated Power/speed	kW/rpm	93/2200	119/2200
Max. torque/speed	N.m/rpm	480/1350	624/1500
Displacement/Cylinders	L	3.9/4	4.5/4
Fuel tank	L	130	215
Battery	V	24	24
Transmission			
Transmission type	-	Hydraulic static transmission	
Shifting	-	Automatic/Manual Shifting	
Number of gears (forward / reverse)	-	2/2	
Max. Travelling speed	km/h	25	
Parking brake	-	Automatic parking brake	
Service brake	-	Wet braking	
Drawbar pull	kN	79	
Gradeability	%	25	
Hydraulic			
Hydraulic pump type	-	Variable Displacement Plunger Pump	
Pressure/Flow	MPa/Lpm	26/150	27/150
Hydraulic Oil	L	220	220
Wheels, etc			
Standard tyres	-	16/70-24-24PR	14.00-24-32PR
Drive wheels (front / rear)	-	2/2	2/2
Steering mode	-	2 wheel steer;4 wheel steer;Crab mode	
Safety cab homologation	-	ROPS/FOPS	ROPS/FOPS
Air-conditioning system	-	Cooling/heating	Cooling/heating
Controls	-	Electronic Joystick	Electronic Joystick

Note : The above data are subject to change without prior notice

Constuction case



Attachments

Expandable multipurpose attachment

To broaden the range of product applications, SOCMA offers a variety of multi-functional attachments for use with telescopic series products. These attachments are compatible with quick-change joints, and the operator can switch between them easily by controlling them from the cab. The rapid coupling capability reduces time and personnel expenses while creating value for consumers.



After-sales service



We have offices or agents globally to facilitate four-in-one sales of machinery, accessories, services, and interactions, and we endeavor to serve users in the less possible time and space.



Create email, network, and WeChat interactive platforms to foster long-term cooperative and mutually beneficial partnerships.



Ongoing user profile management, eager, attentive, and thoughtful technical consultation.



Professional maintenance specialists and a enough quantity of spare parts.